



TECHNICAL SPECIFICATION
MODEL 301.5SP SHORT PERCH TUBE FACING AND SQUARING TOOL
10/01/2015

The 301.5SP (Short Perch) Tube Squaring Tool is designed specifically to prepare tube for autogenous welding. The 301.5SP will face .125" (3.2mm) to 1.500" (38.1mm) outside diameter tubing with a wall thickness up to .125" (3.2mm). The 301.5SP uses a toolless OD saddle clamping system for holding and rounding the tube. The 301.5SP accepts its own torque through the saddle clamping system. The standard saddle clamping system requires a straight length of tube .60" (15.2mm) long. The Short Perch saddle clamping system requires a straight length of tube .19" (4.8mm) long. Speed is controlled by a variable speed electric motor. Feed is cam actuated with an auto retract. The feed handle is at a right angle to the cutter head.

Features:

- The Model 301.5SP is lightweight and easy to handle
- Variable speed brushless cordless electric motors
- Variable speed corded electric motors
- Standard and short perch saddle clamps
- Tool-less saddle change
- The cutting head accepts Squaring Tool Bits.
- The 301.5SP accepts its own torque through the saddle clamping system
- Replaceable transparent chip guards
- Cam-actuated auto retract feed with .200" (5.0mm) travel
- Carrying Case
- Operator's Manual

Specifications:

Basic pipe sizes:

1/8" All schedules	1/2" Schedules 5 through 40
1/4" All schedules	3/4" Schedules 5 through 40
3/8" All schedules	1" Schedules 5S & 10S

Basic tube sizes:

.125" (3.2mm) through 1.500" (38.1mm) with wall thickness up to .125" (3.2mm)

Materials include but are not limited to

Aluminum	Copper nickel alloys
Carbon steel	Stainless steel
Chrome steel (20% max)	
Copper	

Clearances

See Envelope Drawings

Drive Motor Options

- 18VDC Metabo Brushless Cordless Motor Assembly with 110VAC Charger
 - 18VDC Metabo Brushless Cordless Motor Assembly with 220VAC Charger
 - 110VAC 50/60 Hz 9.6 Amp Metabo Corded Motor Assembly
 - 220VAC 50/60 Hz 4.8 Amp Metabo Corded Motor Assembly
 - 100VAC 50/60 Hz 6 Amp Bosch Corded Motor Assembly (*For Japan Only*)
-

Weights

Base machine	5.1 lbs. (2.3 Kg)
Cordless Metabo Motor	4.2 lbs. (1.9 Kg)
Corded Metabo Motor	6.4 lbs. (2.9 Kg)
Corded Bosch Motor (<i>Japanese Version</i>)	4.4 lbs. (2.2 Kg)

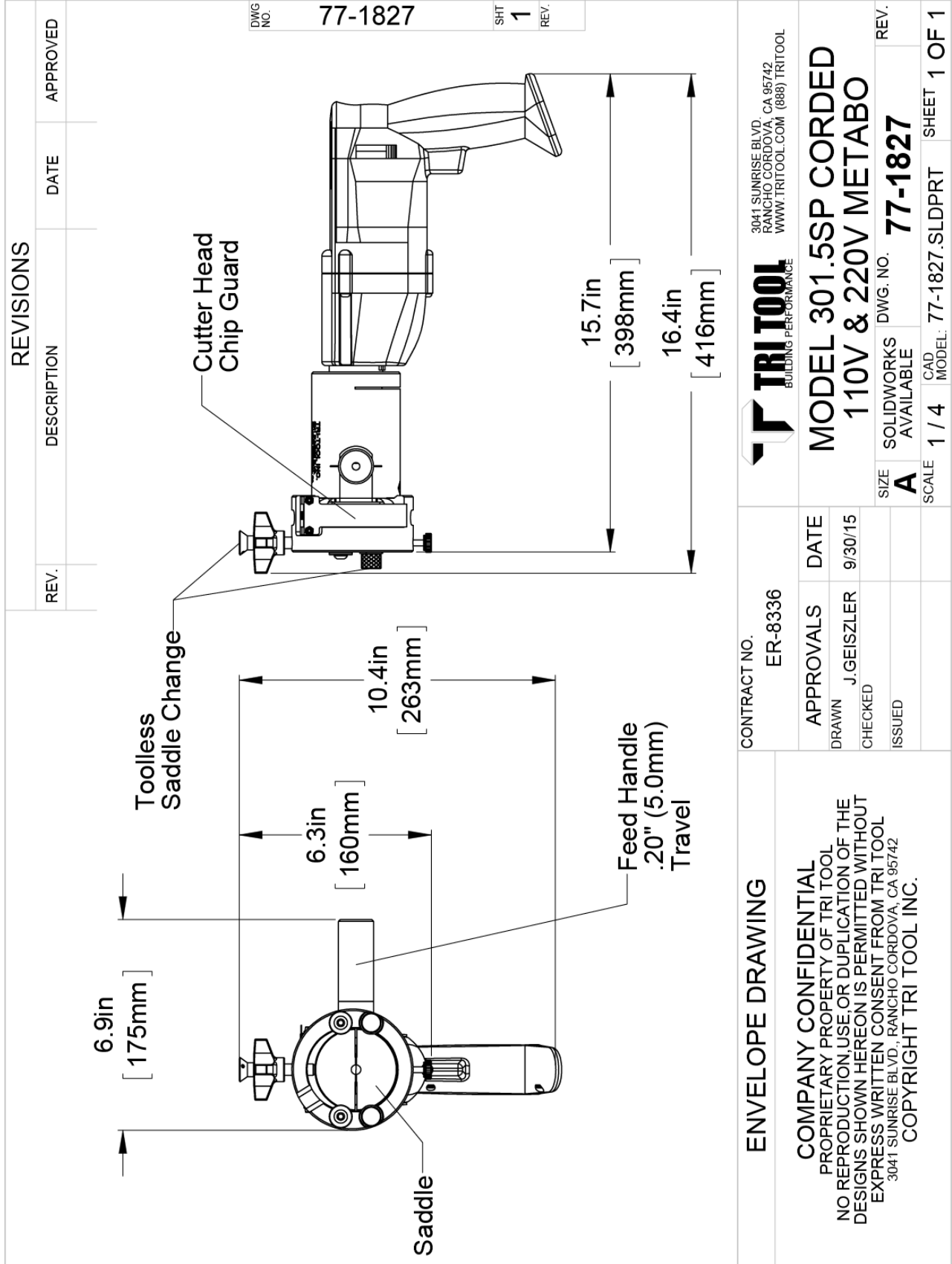
Accessories

- Bench Stand Assembly

Note to the Customer:

Spare Parts and Standard Tool Bits are available from Tri Tool Inc. Engineering design services for custom tool bits and special function modifications are available. All Tri Tool Inc. and allied equipment products are subject to design improvements and specification changes at any time with no obligation to units already sold.

Warranty (limited): Parts and equipment are warranted against defects in material and workmanship for a period of one (1) year from date of purchase. Full details are supplied on request and with the tools.



TRI TOOL <small>BUILDING PERFORMANCE</small>		<small>3041 SUNRISE BLVD. RANCHO CORDOVA, CA 95742 WWW.TRITOO.COM (888) TRITOO</small>	
ENVELOPE DRAWING		MODEL 301.5SSP CORDED 110V & 220V METABO	
CONTRACT NO. ER-8336		DWG. NO. 77-1827	
APPROVALS		DATE	
DRAWN J. GEISZLER		9/30/15	
CHECKED			
ISSUED			
SCALE 1 / 4		CAD MODEL: 77-1827.SLDPRT	
SIZE A		SHEET 1 OF 1	
SOLIDWORKS AVAILABLE			

COMPANY CONFIDENTIAL
 PROPRIETARY PROPERTY OF TRI TOOL
 NO REPRODUCTION USE OR DUPLICATION OF THE
 DESIGNS SHOWN HEREON IS PERMITTED WITHOUT
 EXPRESS WRITTEN CONSENT FROM TRI TOOL
3041 SUNRISE BLVD., RANCHO CORDOVA, CA 95742
 COPYRIGHT TRI TOOL INC.

REV. NO.	DESCRIPTION	DATE	APPROVED

DWG NO. 77-1828

SHT 1

REV.

DWG NO. 77-1828

SHT 1

REV.

ENVELOPE DRAWING	CONTRACT NO. ER-8336 APPROVALS DRAWN J. GEISZLER CHECKED ISSUED	DATE 9/30/15	<p>MODEL 301.5SP CORDLESS METABO</p>
COMPANY CONFIDENTIAL PROPRIETARY PROPERTY OF TRI TOOL NO REPRODUCTION, USE, OR DUPLICATION OF THE DESIGNS SHOWN HEREON IS PERMITTED WITHOUT EXPRESS WRITTEN CONSENT FROM TRI TOOL 3041 SUNRISE BLVD., RANCHO CORDOVA, CA 95742 COPYRIGHT TRI TOOL INC.		SIZE A SOLIDWORKS AVAILABLE	DWG. NO. 77-1828 REV.
SCALE 1 / 4 CAD MODEL: 77-1828.SLDPRT		SHEET 1 OF 1	