



**TECHNICAL SPECIFICATION
MODEL 301 TUBE FACING AND SQUARING TOOL
9/16/2016**

The Model 301 Tube Squaring Tool is designed specifically to prepare tubes for autogenous welding. The 301 will face (square) .125" (3.2mm) to 1.102" (28.0mm) outside diameter tubing with a wall thickness up to .125" (3.2mm). Speed control is provided with a variable speed electric drive, or a pneumatic drive motor. Feed is provided by a cam actuated feed handle at right angles to the cutter head. The 301 uses OD clamping Collets which hold and round the tubing and provide torque acceptance of the Tool. The clamping collets on the standard system are retained by a collet nut assy w/guard. A Quick Lock clamping system is available for increased productivity with the 301 Tube Squaring Tool.

The Model 301 System comes with:

- | | |
|---------------------------|------|
| • Model 301 Subassembly | 1 ea |
| • Electric Motor Assembly | 1 ea |
| • Nut Assembly W/ Guard | 1 ea |
| • Carrying Case | 1 ea |
| • Wrench Kit | 1 ea |
| • Operator's Manual | 1 ea |

Design and Operation Features:

- The 301 accepts its own torque through the collet clamping system.
- The collet provides accurate centering and full diameter support for minimum distortion of thin wall tubing.
- The Cutting Head accepts Squaring, J-Beveling, Beveling or ID Deburring Tool Bits.
- The Model 301 is lightweight and easy to handle.
- All tools needed for operation are provided with the system.

Specifications:

Basic pipe sizes:

1/8" All schedules	1/2" Schedules 5 through 40
1/4" All schedules	3/4" Schedules 5 through 40
3/8" All schedules	

Basic tube sizes:

.125" (3.2mm) through 1.102" (28.0mm) with wall thickness up to .125" (3.2mm)

Material Cutting Capabilities

Mild steels, chrome steels (Rc 35 max.), stainless steel, copper-nickel alloys and aluminum without limitations except size and wall thickness as specified.

Inconel and some other high temperature alloys may require special procedures as a function of wall thickness and type of end preparation.

Contact Tri Tools Engineering Department for details.

Clearances

See Envelope Drawings

Drive Motor Options

- 110VAC 50/60 Hz 5.5 Amp Corded Motor Assembly
- 220VAC 50/60 Hz 5.2 Amp Corded Motor Assembly
- 14.4VDC Cordless Motor Assembly with 110VAC Charger
- 14.4VDC Cordless Motor Assembly with 220VAC Charger
- 22 CFM @ 90 PSI Air Motor Assembly

Weights

Base machine	6.8 lbs. (3.1 Kg)
--------------	-------------------

Feed

Manual – A cam actuated feed handle is mounted at right angle to the cutting head and provides .200" (5.1mm) of travel.

Mounting

Manually actuated collet clamping system using a collet nut assy w/guard and wrench.

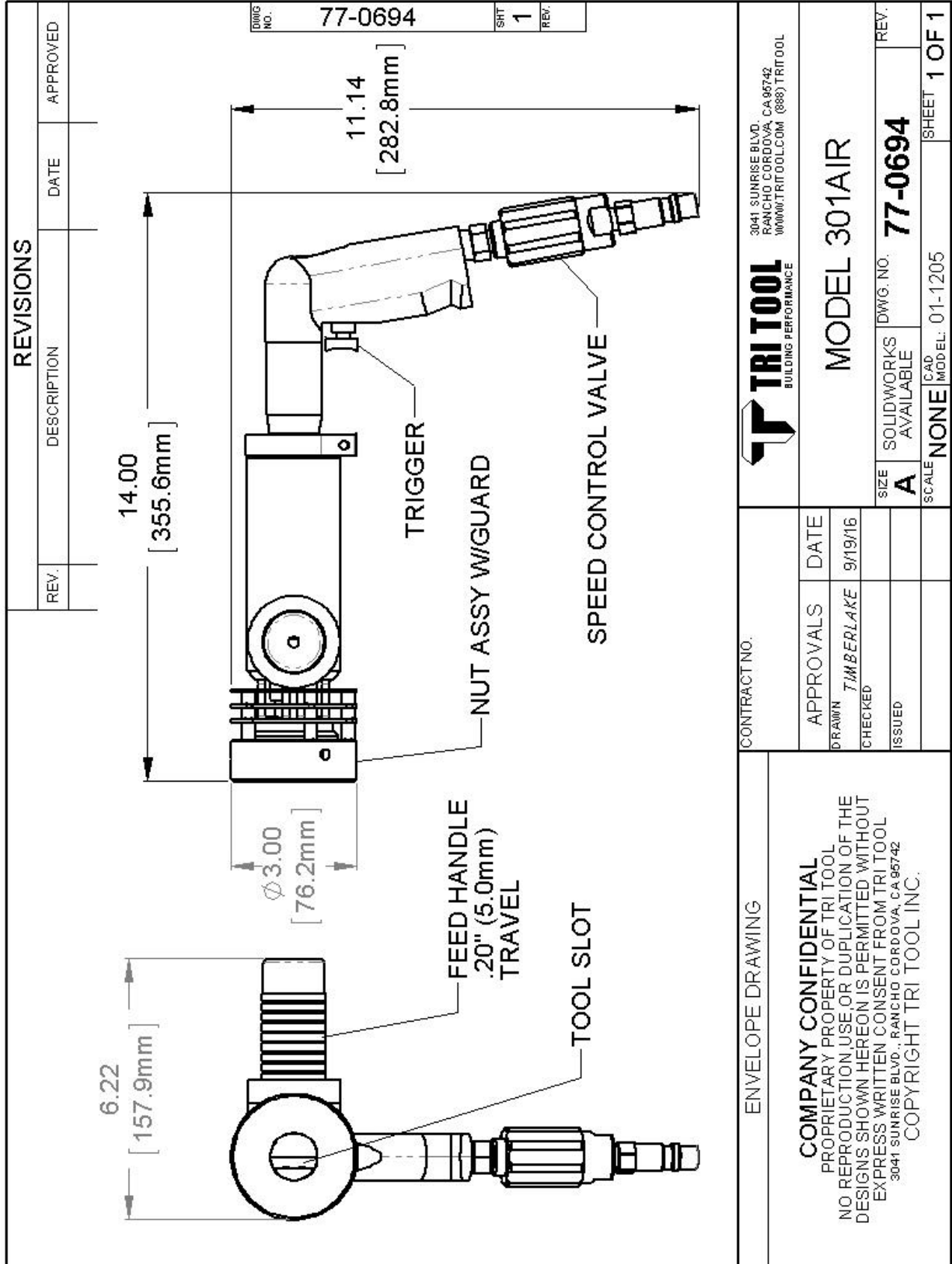
Accessories

- 110 VAC (Bosch) Motor Assembly
- 110 VAC (Milwaukee) Motor Assembly
- 220 VAC (Bosch) Motor Assembly
- 14.4 VDC Cordless Motor Assembly
- Pneumatic Motor Assembly
- Air Caddy, FRL
- Quick Clamp Kit
- Bench Stand Assembly
- Electric Foot Pedal
- Variable Speed Transformer Control (20 VAC to 140 VAC Output)

Note to Customer:


Spare Parts and Standard Tool Bits are available from Tri Tool Inc. Engineering design services for custom tool bits and special function modifications are available. All Tri Tool Inc. and allied equipment products are subject to design improvements and specification changes at any time with no obligation to units already sold.

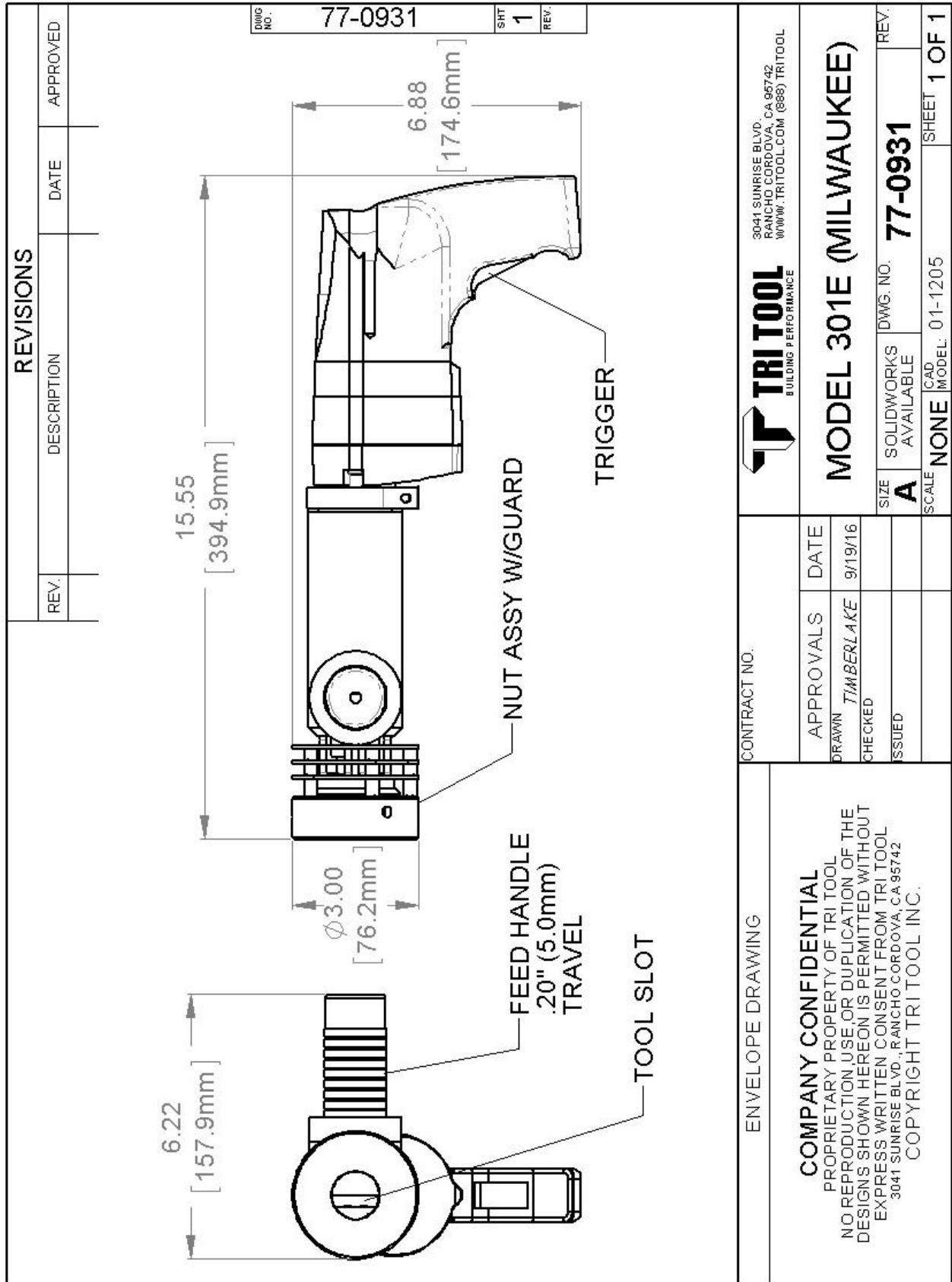
Warranty (limited): Parts and equipment are warranted against defects in material and workmanship for a period of one (1) year from date of purchase. Full details are supplied on request and with the tools.

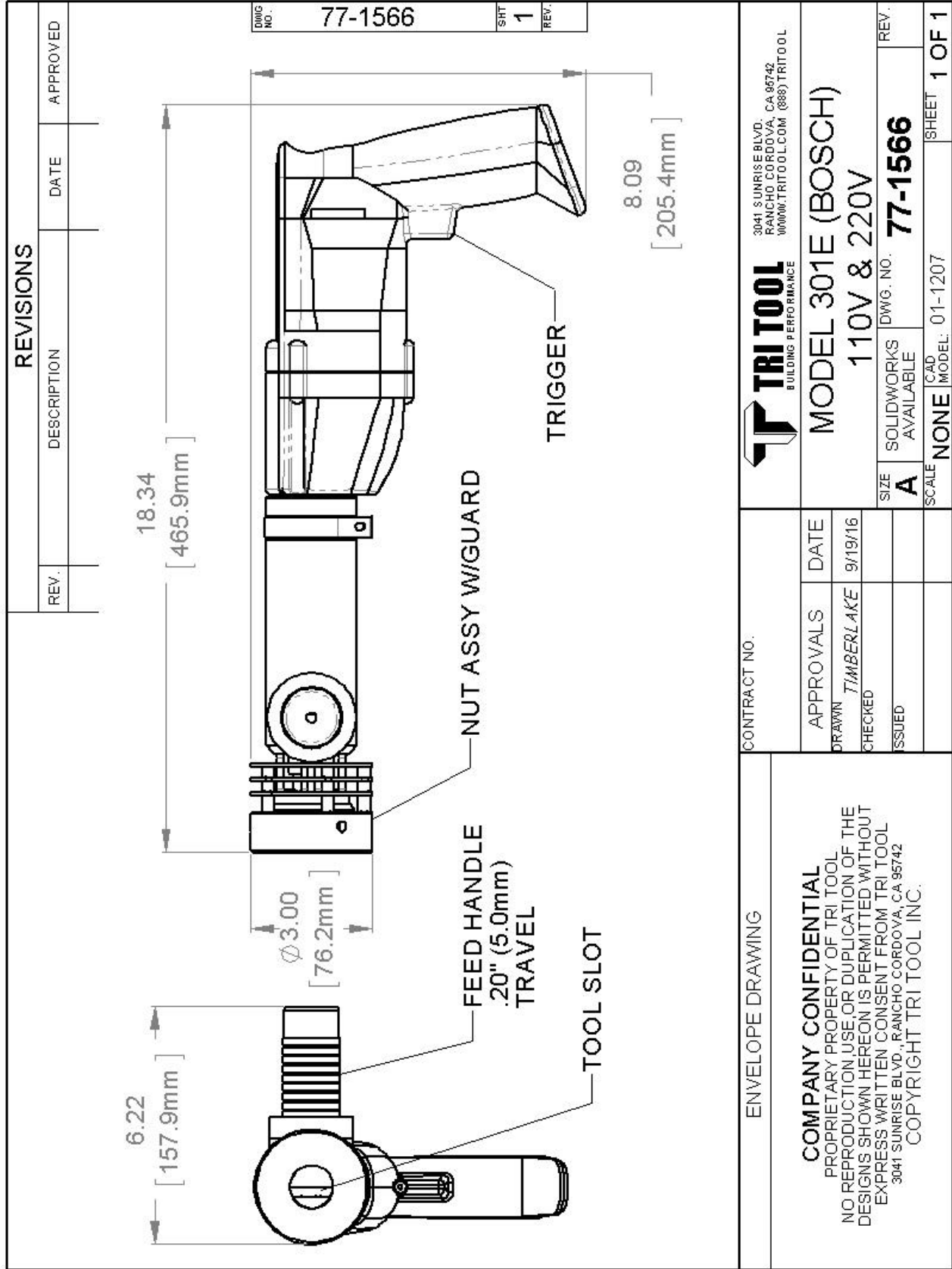


DWG NO. 77-0694
SHT 1
REV.

REVISIONS			
REV.	DESCRIPTION	DATE	APPROVED

 <p>3041 SUNRISE BLVD. RANCHO CORDOVA, CA 95742 WWW.TRITOO.COM (888) TRITOO</p>		<p>MODEL 301AIR</p>	
<p>CONTRACT NO.</p>		<p>SCALE NONE I-CAD MODEL: 01-1205 SHEET 1 OF 1</p>	
<p>APPROVALS</p> <p>DRAWN <i>TIMBERLAKE</i></p> <p>CHECKED</p> <p>ISSUED</p>	<p>DATE</p> <p>9/19/16</p>	<p>SIZE</p> <p>A</p>	<p>SOLIDWORKS DWG. NO. 77-0694</p> <p>REV.</p>
<p>ENVELOPE DRAWING</p> <p>COMPANY CONFIDENTIAL PROPRIETARY PROPERTY OF TRI TOOL NO REPRODUCTION, USE, OR DUPLICATION OF THE DESIGNS SHOWN HEREON IS PERMITTED, WITHOUT EXPRESS WRITTEN CONSENT FROM TRI TOOL 3041 SUNRISE BLVD., RANCHO CORDOVA, CA 95742 COPYRIGHT TRI TOOL INC.</p>			

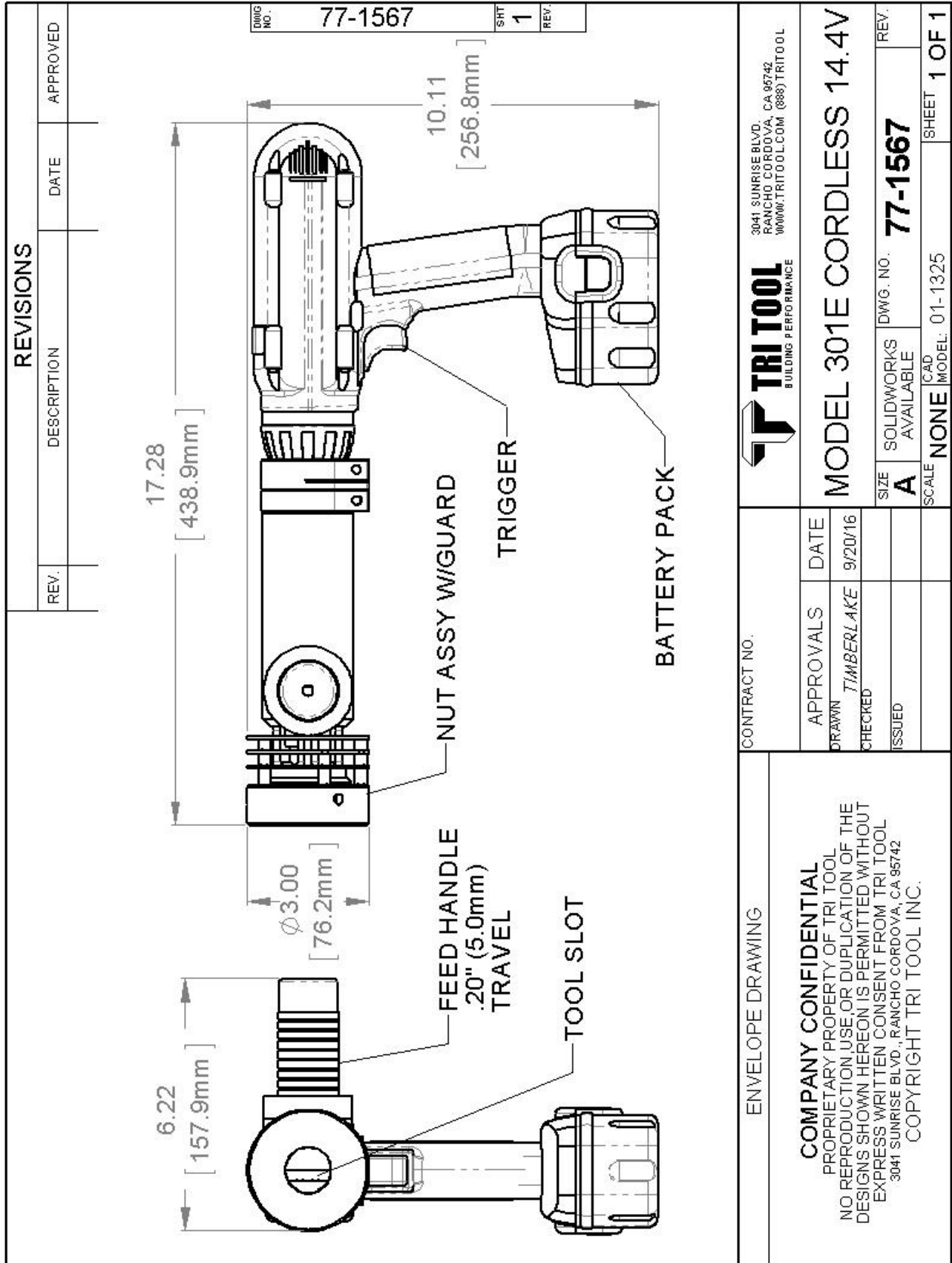




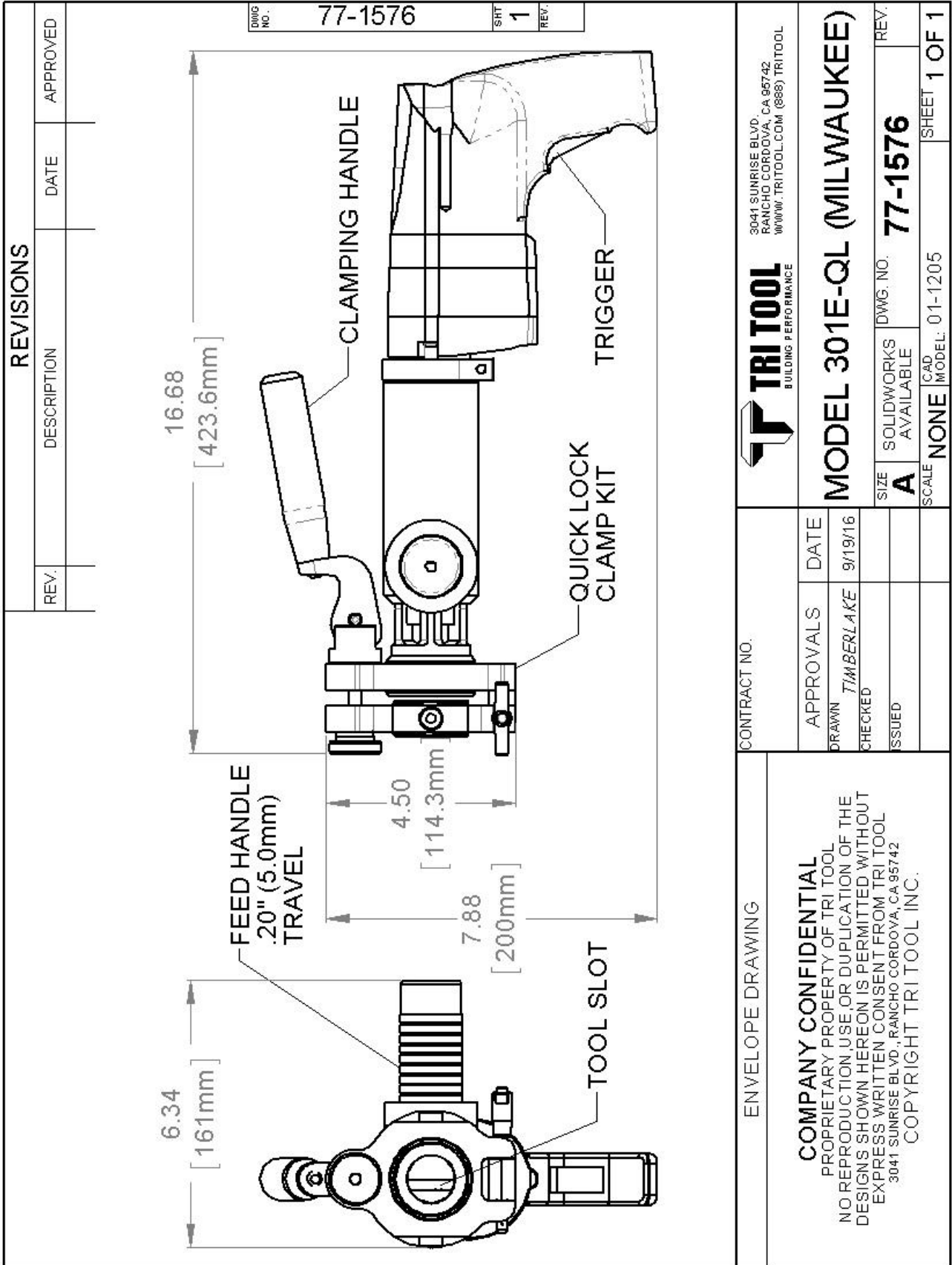
		3041 SUNRISE BLVD. RANCHO CORDOVA, CA 95742 WWW.TRITOO.COM (888) TRITOO	
MODEL 301E (BOSCH) 110V & 220V		SIZE A SOLIDWORKS DWG. NO. 77-1566	REV. SCALE NONE
CONTRACT NO. APPROVALS: DRAWN <i>TIMBERLAKE</i> DATE 9/19/16 CHECKED ISSUED SCALE NONE CAD MODEL: 01-1207		SHEET 1 OF 1	

ENVELOPE DRAWING

COMPANY CONFIDENTIAL
 PROPRIETARY PROPERTY OF TRI TOOL
 NO REPRODUCTION USE OR DUPLICATION OF THE
 DESIGNS SHOWN HEREON IS PERMITTED WITHOUT
 EXPRESS WRITTEN CONSENT FROM TRI TOOL
 3041 SUNRISE BLVD., RANCHO CORDOVA, CA 95742
 COPYRIGHT TRI TOOL INC.



TRI TOOL <small>BUILDINGS PERFORMANCE</small>		3041 SUNRISE BLVD. RANCHO CORDOVA, CA 95742 900000.TRI TOOL.COM (888) TRI TOOL	
MODEL 301E CORDLESS 14.4V		SIZE A SOLIDWORKS DWG. NO. 77-1567 REV.	SCALE NONE MODEL: 01-1325 SHEET 1 OF 1
CONTRACT NO.		APPROVALS DRAWN <i>TIMBERLAKE</i> DATE 9/20/16 CHECKED ISSUED	CAD MODEL: 01-1325
ENVELOPE DRAWING		<p style="text-align: center;">COMPANY CONFIDENTIAL PROPRIETARY PROPERTY OF TRI TOOL NO REPRODUCTION USE, OR DUPLICATION OF THE DESIGNS SHOWN HEREON IS PERMITTED WITHOUT EXPRESS WRITTEN CONSENT FROM TRI TOOL 3041 SUNRISE BLVD., RANCHO CORDOVA, CA 95742 COPYRIGHT TRI TOOL INC.</p>	



TRI TOOL
BUILDING PERFORMANCE

3041 SUNRISE BLVD.
RANCHO CORDOVA, CA 95742
WWW.TRITOO.COM (888) TRITOO

MODEL 301E-QL (MILWAUKEE)

SIZE **A** SOLIDWORKS AVAILABLE DWG. NO. **77-1576** REV.

SCALE **NONE** CAD MODEL: 01-1205 SHEET **1 OF 1**

ENVELOPE DRAWING

COMPANY CONFIDENTIAL
 PROPRIETARY PROPERTY OF TRI TOOL
 NO REPRODUCTION, USE, OR DUPLICATION OF THE
 DESIGNS SHOWN HEREON IS PERMITTED WITHOUT
 EXPRESS WRITTEN CONSENT FROM TRI TOOL
 3041 SUNRISE BLVD., RANCHO CORDOVA, CA 95742
 COPYRIGHT TRI TOOL INC.