



TECHNICAL SPECIFICATION

MODEL 300 MICROFACER™ TUBE FACING AND SQUARING TOOL

The Model 300 MICROFACER™ Tube Squaring Tool is designed specifically to prepare tubes for autogenous welding. The 300 MICROFACER™ will face (square) .125" to .750" (3.2 mm to 19.1 mm) outside diameter tubing with a wall thickness up to .125" (3.2 mm). The 300 MICROFACER™ uses an OD saddle clamping system for holding and rounding the tube. The 300 MICROFACER™ accepts its own torque through the saddle clamping system. The standard saddle clamping system requires a straight length of tube .22" (5.6 mm) long. Speed control is provided with a variable speed cordless electric drive. Feed is provided by a cam actuated feed handle at right angles to the cutter head.

The Model 300 MICROFACER™ System comes complete with:

- | | |
|-----------------------------------|-------|
| • Model 300 MICROFACER™ Sub Assy. | 1 ea. |
| • 9.6V Cordless Motor Assy. | 1 ea. |
| • Extra Battery Pack | 1 ea. |
| • Battery Charger | 1 ea. |
| • Wrench Kit | 1 ea. |
| • Carrying Case | 1 ea. |
| • Operator's Manual | 1 ea. |

Design and Operating Features

- The 300 MICROFACER™ accepts its own torque through the Saddle Clamping System.
- The cutting head accepts Squaring Tool Bits.
- All required wrenches for operating the 300 MICROFACER™ are supplied with the machine.
- The Model 300 MICROFACER™ is lightweight and easy to handle.

Specifications

Tube Cutting Capacities

Basic Tube Sizes

.125" through .750" (3.2 mm to 19.1 mm) with wall thickness up to .125" (3.2mm).

Outside diameter mounting range

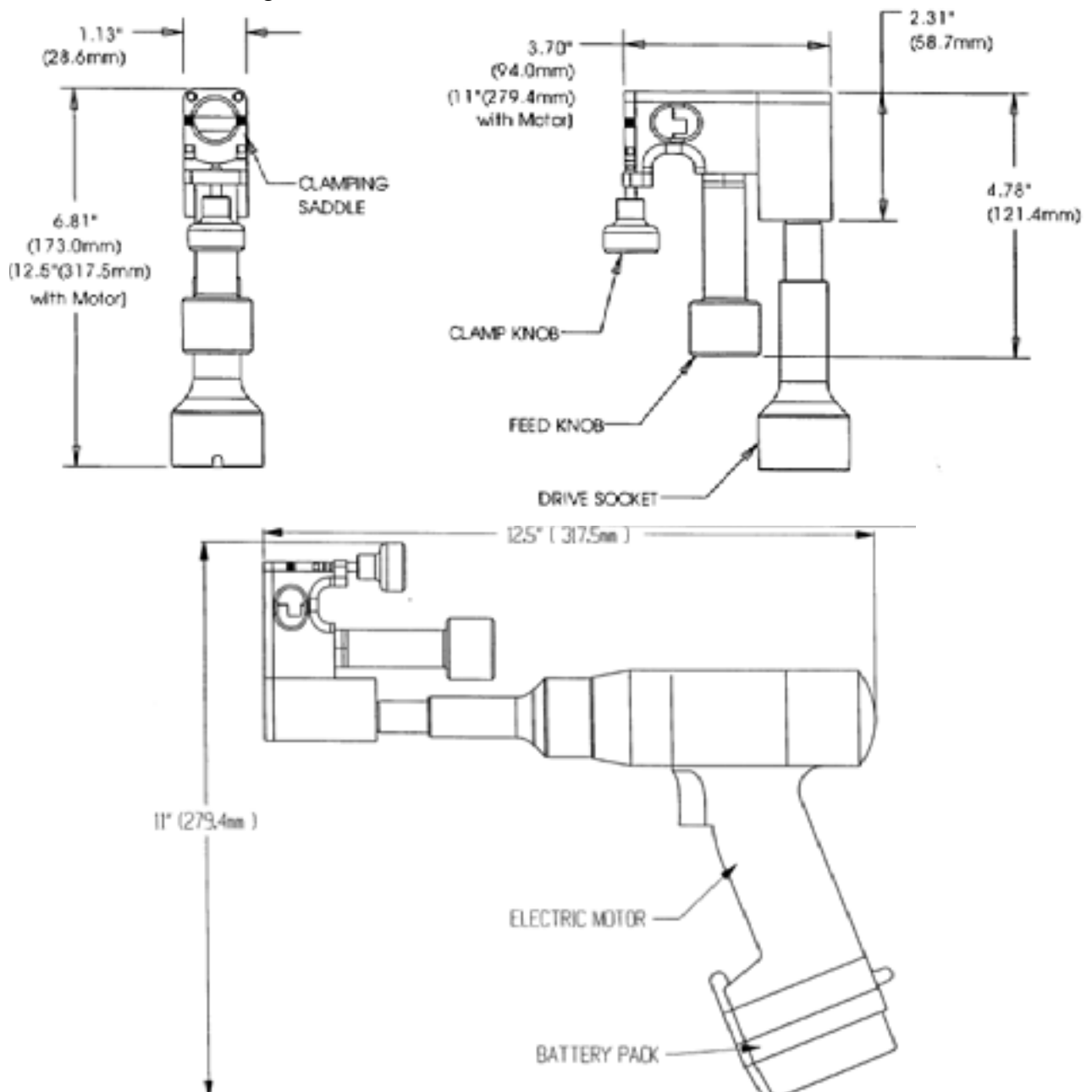
.125" to .750" (3.2 mm to 19.1 mm) OD.

Material Cutting Capabilities

- Mild steels
- Chrome steels (Rc 35 max)
- Stainless steel
- Copper-nickel alloys and Aluminum without limitations except size and wall thickness.
- Inconel and some other high temperature alloys may require special procedures as a function of wall thickness and type of end preparations. Contact Tri Tool's Engineering Department for details.

Clearance and Dimensions

Reference Drawing No. 77-1589



Weight

| | |
|------------------------|-------------------|
| Cutting Head | 1.55 lbs (.70 kg) |
| Cutting Head and Motor | 5.35 lbs (2.4kg) |

Drive System

A variable speed Cordless Electric Drive Motor

| | |
|-----------------------------|-------------|
| Free speed: | 540 RPM |
| Normal working speed range: | 120-380 RPM |

Power Requirements

| | |
|-------------------------------|------------------------------|
| Cordless Electric Drive Motor | 9.6 VDC, Battery Power Pack. |
|-------------------------------|------------------------------|

Available Feed Travel

.200" (5.1 mm)

Speed Control

On/Off Trigger control with Variable Speed.

Mounting

Manually actuated clamp.

Feed

Manual - A cam actuated feed handle is mounted at right angles to the cutting head and provides .200" (5.1 mm) of travel.

Note To The Customer

Spare Parts and Standard Tool Bits are available from stock. Engineering design services for custom tool bits and special function modifications are available from the factory.

All Tri Tool and allied equipment products are subject to design improvements and specification changes at any time with no obligation to units already sold.

Warranty (limited): Parts and equipment are warranted against defects in material and workmanship for a period of one (1) year from date of purchase. Full details supplied on request and/or with the tools.



www.tritool.com



@tritooltechnologies



@tritooltech



@tritooltechnologies



3041 Sunrise Blvd,
Rancho Cordova,
CA 95742
+1-916-288-6100
+1-800-345-5015
Fax 916-288-6160

Copyright © Proprietary property of Tri Tool Inc. No reproduction, use or duplication of the information shown hereon is permitted without the express written consent of Tri Tool Inc.